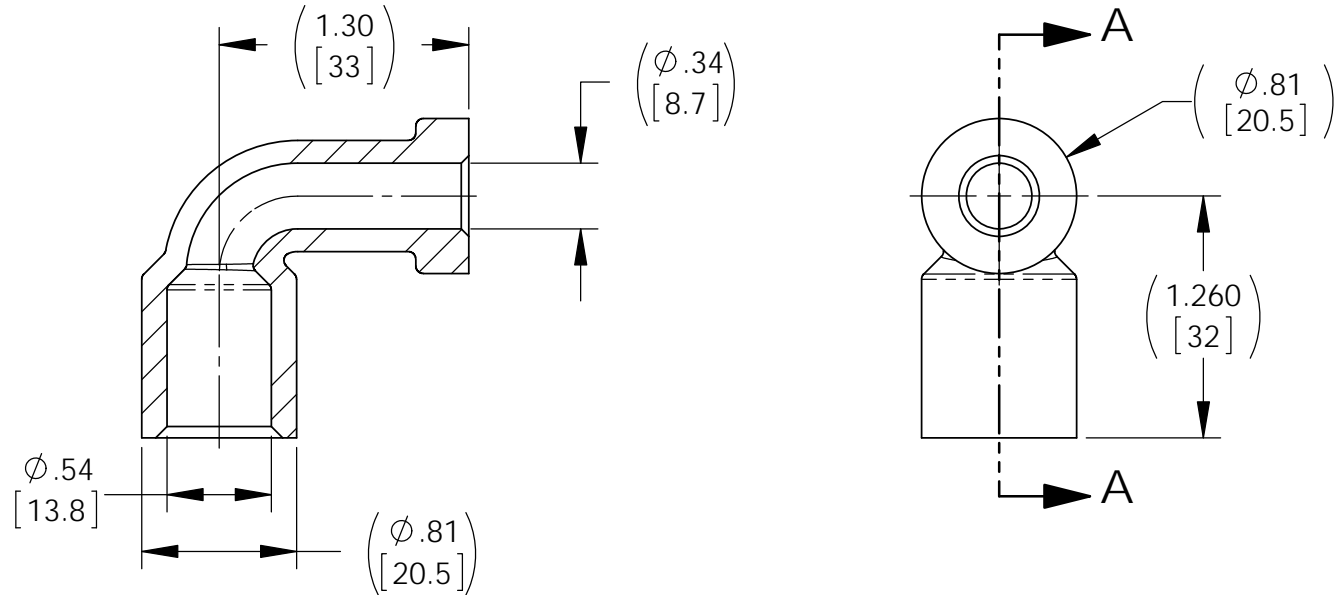


NOTES: UNLESS OTHERWISE SPECIFIED

1. APPROVED SOURCE: MINIATURE PRECISION COMPONENTS INC.
 PO BOX 1901
 100 WISCONSIN ST.
 WALWORTH, WI 53184
 PHONE: (262)275-5791
 PN: MR0093

REVISIONS			
REV	DESCRIPTION	DATE	APPROVED
A	REVISED SOURCE PN: MR0093 WAS MR0024 (NOTE 1), UPDATED VIEWS	2/28/15	JBT

DESCRIPTION: 3/8 X 1/2 RUBBER ELBOW



SECTION A-A

SOURCE CONTROL DRAWING

UNLESS OTHERWISE SPECIFIED DIMENSIONS ARE IN INCHES TOLERANCES ARE:			This document contains data which is PROPRIETARY to Concorde Battery Corp. Any use thereof is subject to the proprietary interest of Concorde. No data is to be disclosed to others without the written permission of Concorde Battery Corp.			CONCORDE BATTERY CORPORATION			
FRACTIONS	DECIMALS	ANGLES	APPROVALS		DATE	2009 SAN BERNARDINO RD, W. COVINA, CA 91790			
	.XX ± .XXX ±		DRAWN	D. AYALA	3/22/07	TITLE ELBOW, VENT ADAPTER, 3/8" X 1/2"			
TREATMENT	NONE		CHECKED	AMIII	4/4/07	SIZE	CAGE CODE	DWG NO.	REV
FINISH	NONE		APPROVED	JBT	4/4/07	A	63017	8003	A
SIMILAR TO	CALC WT		ISSUED	BJ	3/2/15	SCALE	1:1	SHEET	1 OF 1