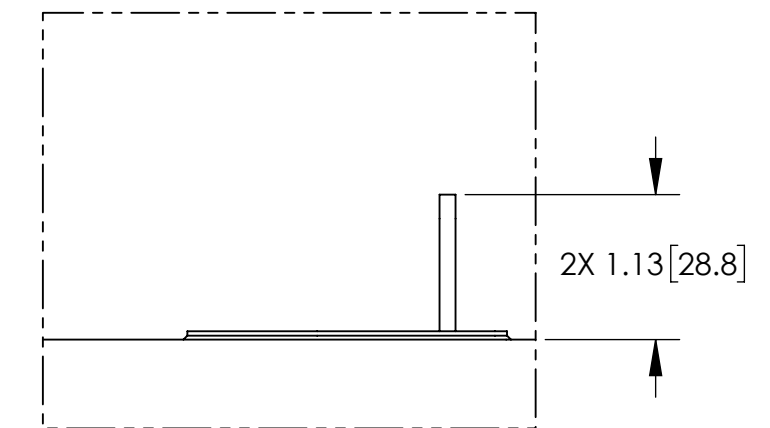
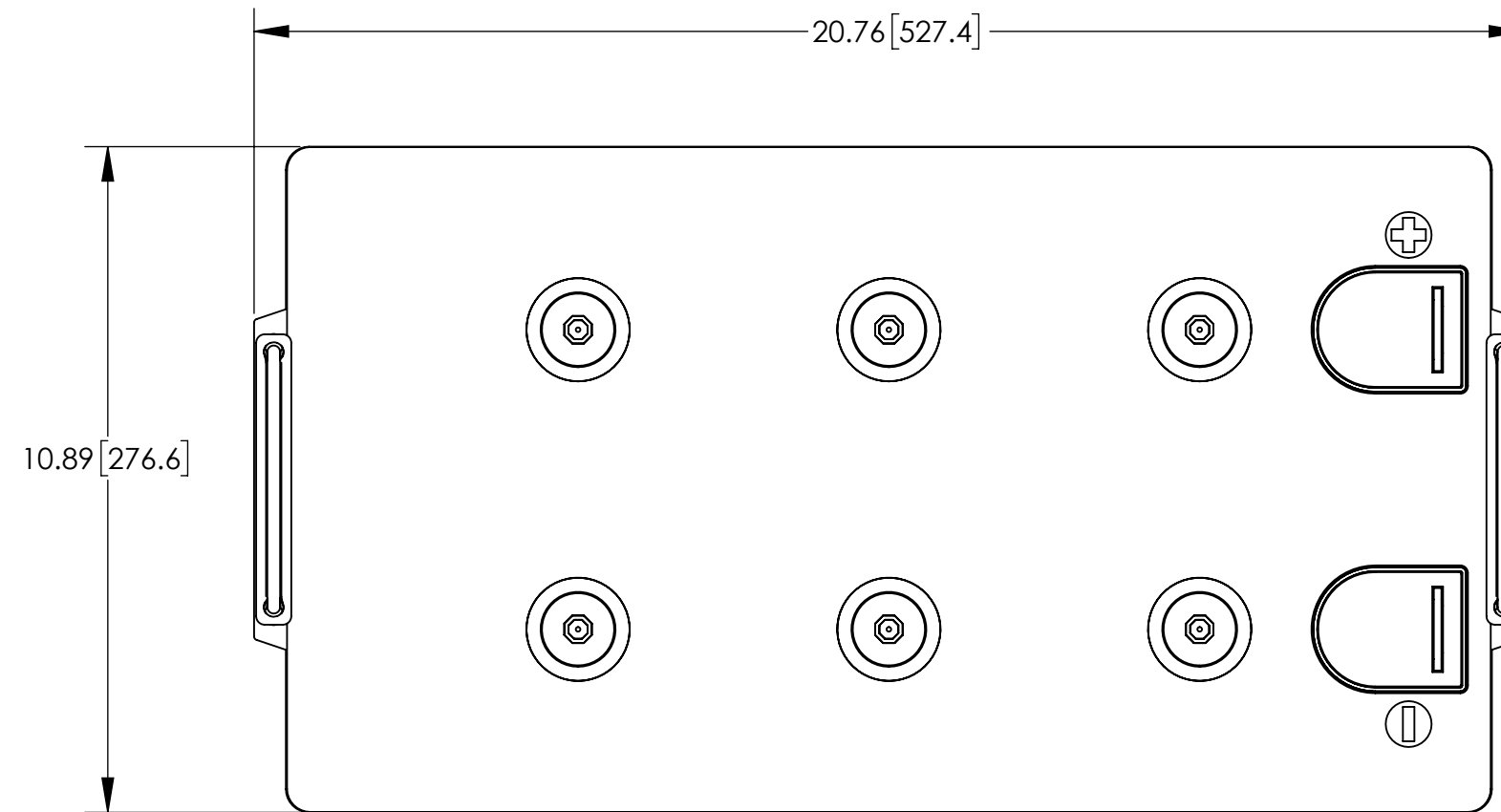


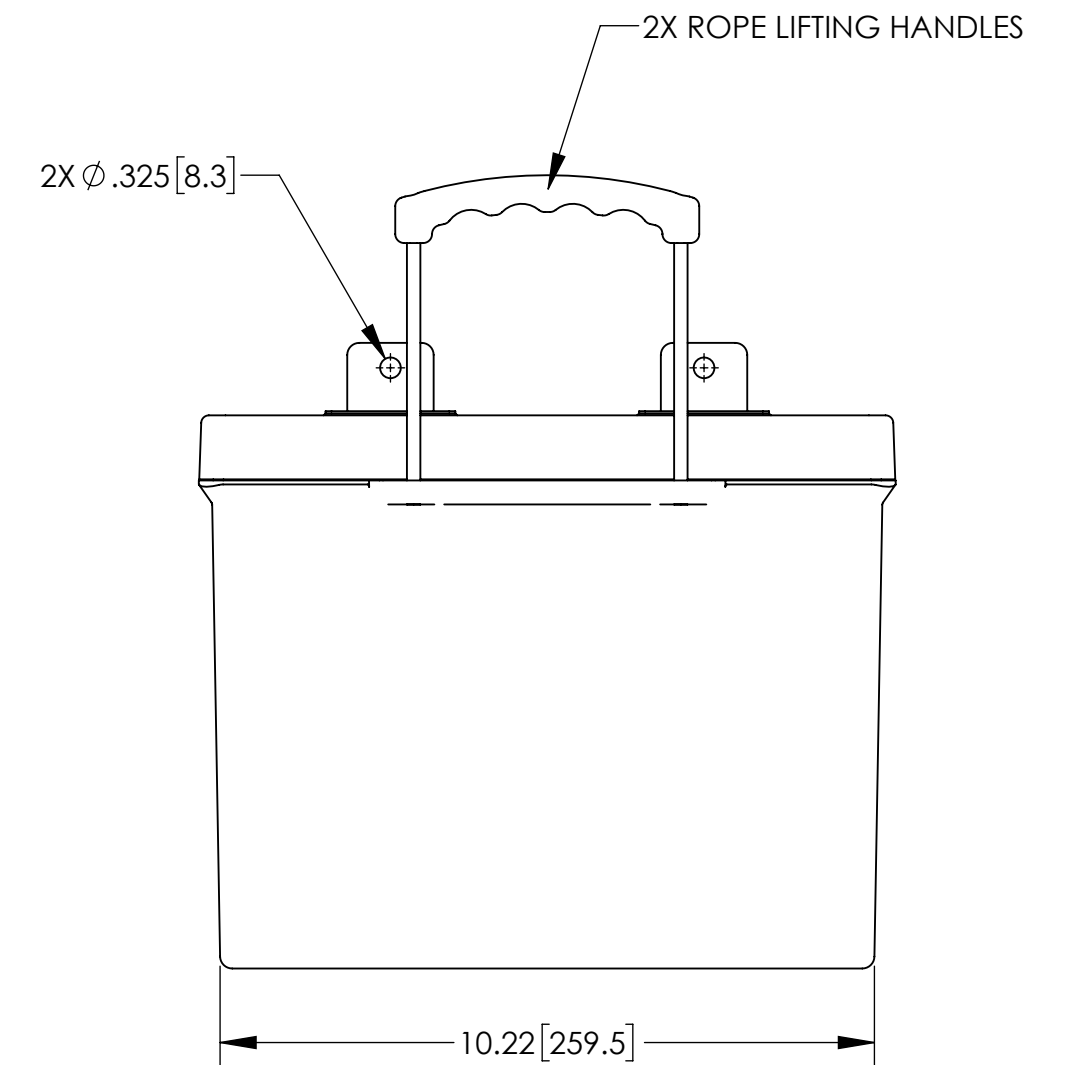
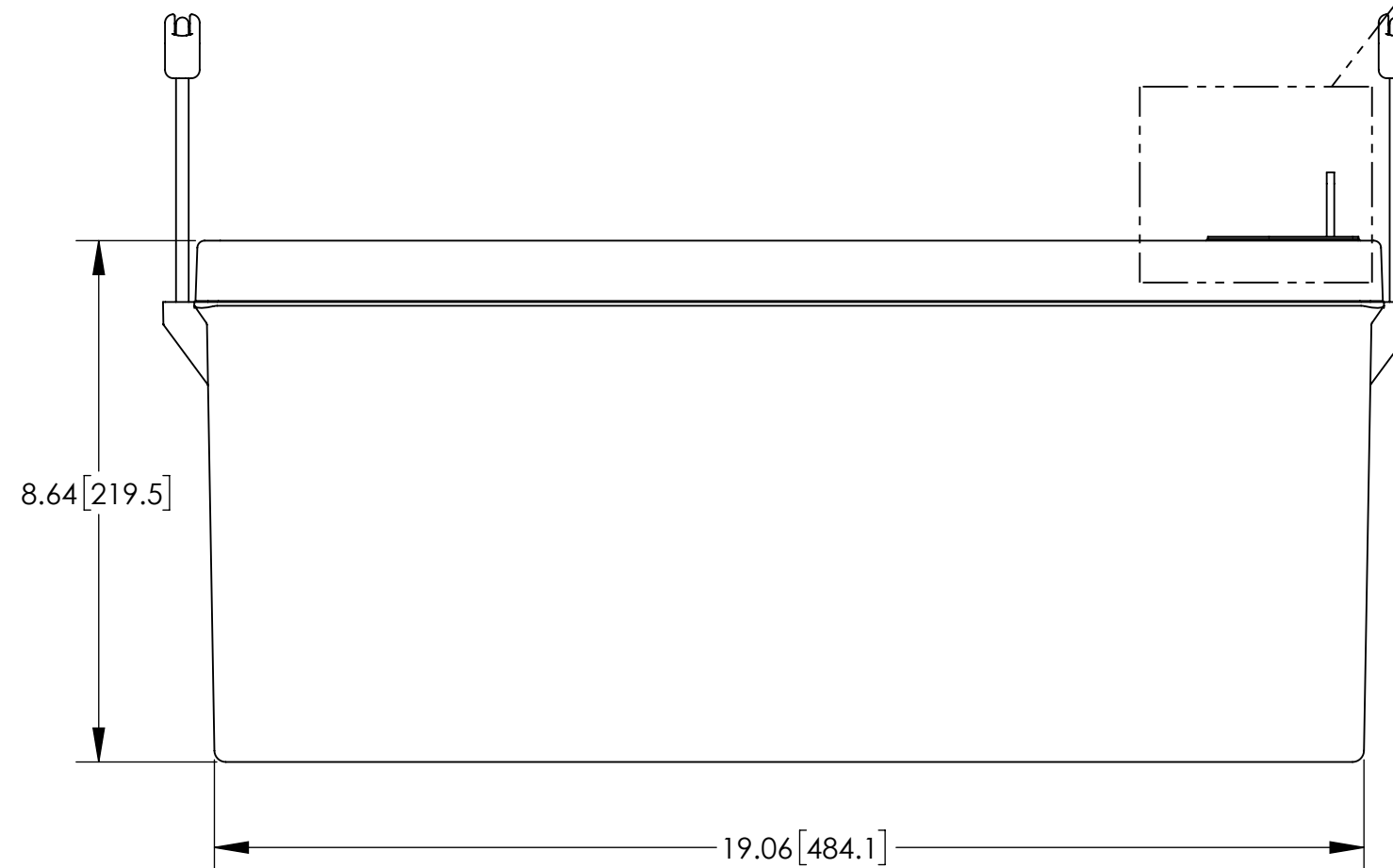
NOTES: UNLESS OTHERWISE SPECIFIED

- SEE DRAWING NO. CB-00295 AND PROCEDURE P-1000 FOR ASSEMBLY AND TEST INSTRUCTION. PROCEDURES AND ASSEMBLY DRAWINGS ARE FOR INTERNAL USE ONLY.
- ALL TESTING IS PERFORMED IAW BATTERY COUNCIL INTERNATIONAL STANDARDS.
- DIMENSIONS ARE INCH [MILLIMETER].
- TERMINAL HARDWARE KIT PROVIDED, PART NUMBER 6916.

REVISIONS			
REV	DESCRIPTION	DATE	APPROVED
A	UPDATED FOR EU 1542 COMPLIANCE	8/16/24	PH



HEAVY DUTY L-BLADE  
SCALE 2 : 3



PART NUMBER	PVX-2580L
NOMINAL WEIGHT	159 LBS [72.1 KG]
NOMINAL VOLTAGE	12 VOLTS
RATED CAPACITY @ 24 HOUR RATE TO 1.75VPC @ 77°F (25°C)	258 AH
RATED ENERGY @ 24 HOUR RATE TO 1.75VPC @ 77°F (25°C)	3096 WH
NOMINAL INTERNAL RESISTANCE @ 77°F (25°C)	1.86 MILLIOHMS
MAXIMUM POWER @ 77°F (25°C)	19.4 KW
CAPACITY FADE	TYPICALLY 50% OR 80% AT EOL (USER DEFINED)
POWER FADE	TYPICALLY 50% OR 80% AT EOL (USER DEFINED)
ENERGY ROUND TRIP EFFICIENCY	80%

ENVELOPE DRAWING

UNLESS OTHERWISE SPECIFIED DIMENSIONS ARE IN INCHES TOLERANCES ARE:			CONTRACT NO.		CONCORDE BATTERY CORPORATION 2009 SAN BERNARDINO RD, W. COVINA, CA 91790		
FRACTIONS	DECIMALS	ANGLES	APPROVALS	DATE	TITLE		
±1/32	.XX ± .12 .XXX ± .060	± 1°	DRAWN N. SANCHEZ	7/23/20	BATTERY, 12 VOLT, PVX-2580L		
TREATMENT	NONE		CHECKED AMIII	7/23/20	SIZE	CAGE CODE	DWG NO.
FINISH	NONE		APPROVED PH	7/23/20	C	63017	PVX-2580L
SIMILAR TO	CALC WT		ISSUED DH	8/20/24	SCALE	1:3	SHEET 1 OF 1
							REV A