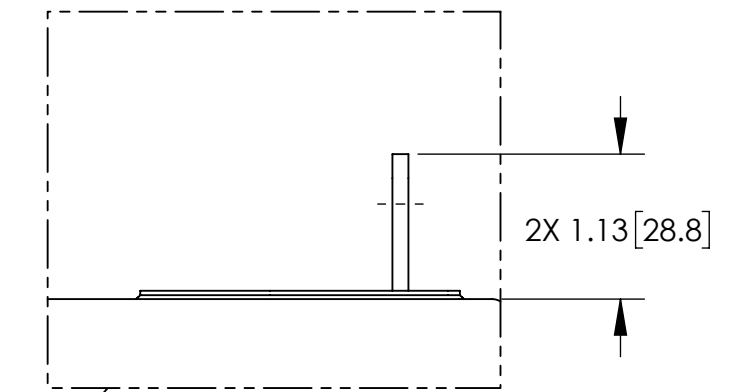
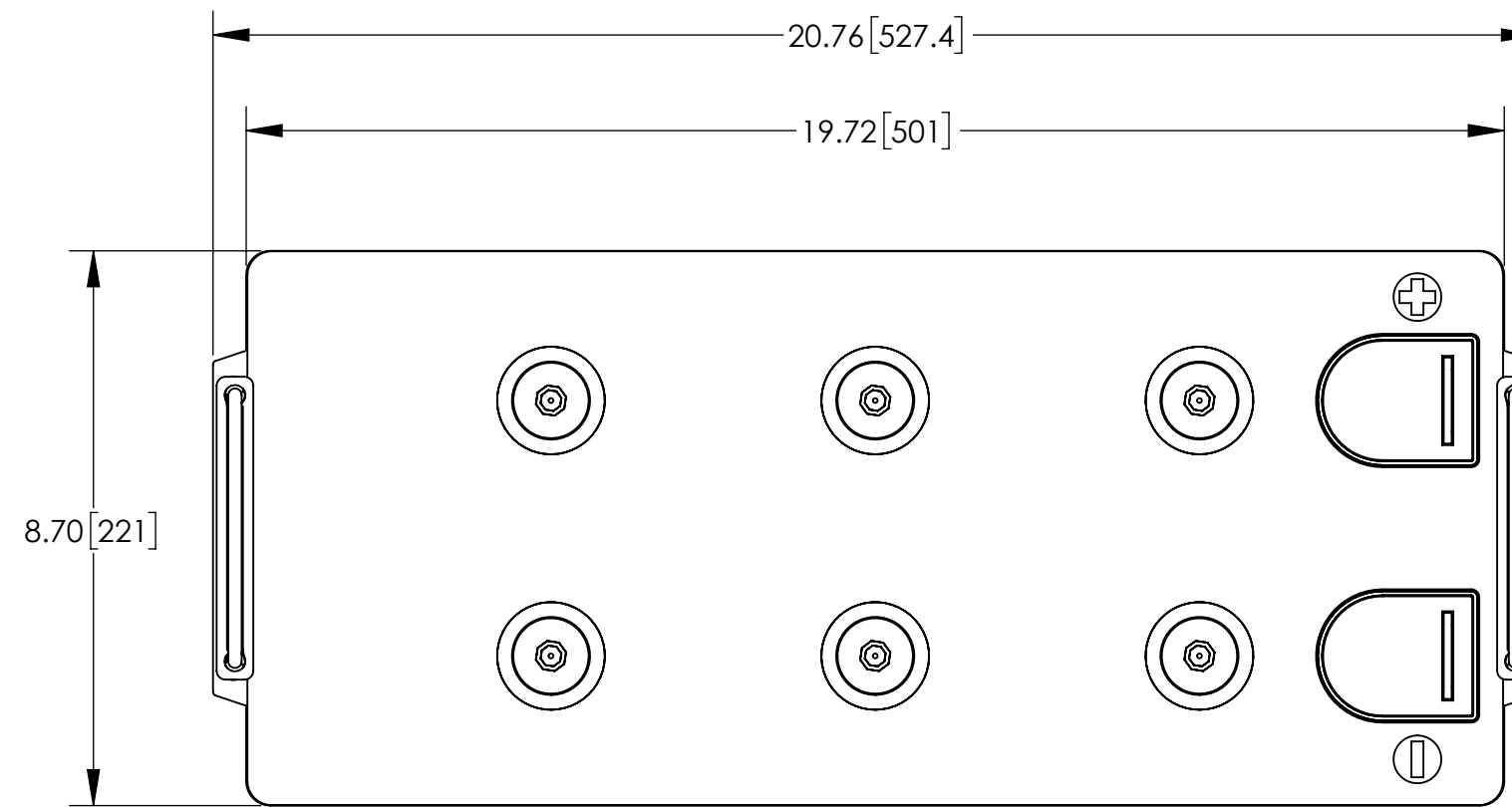


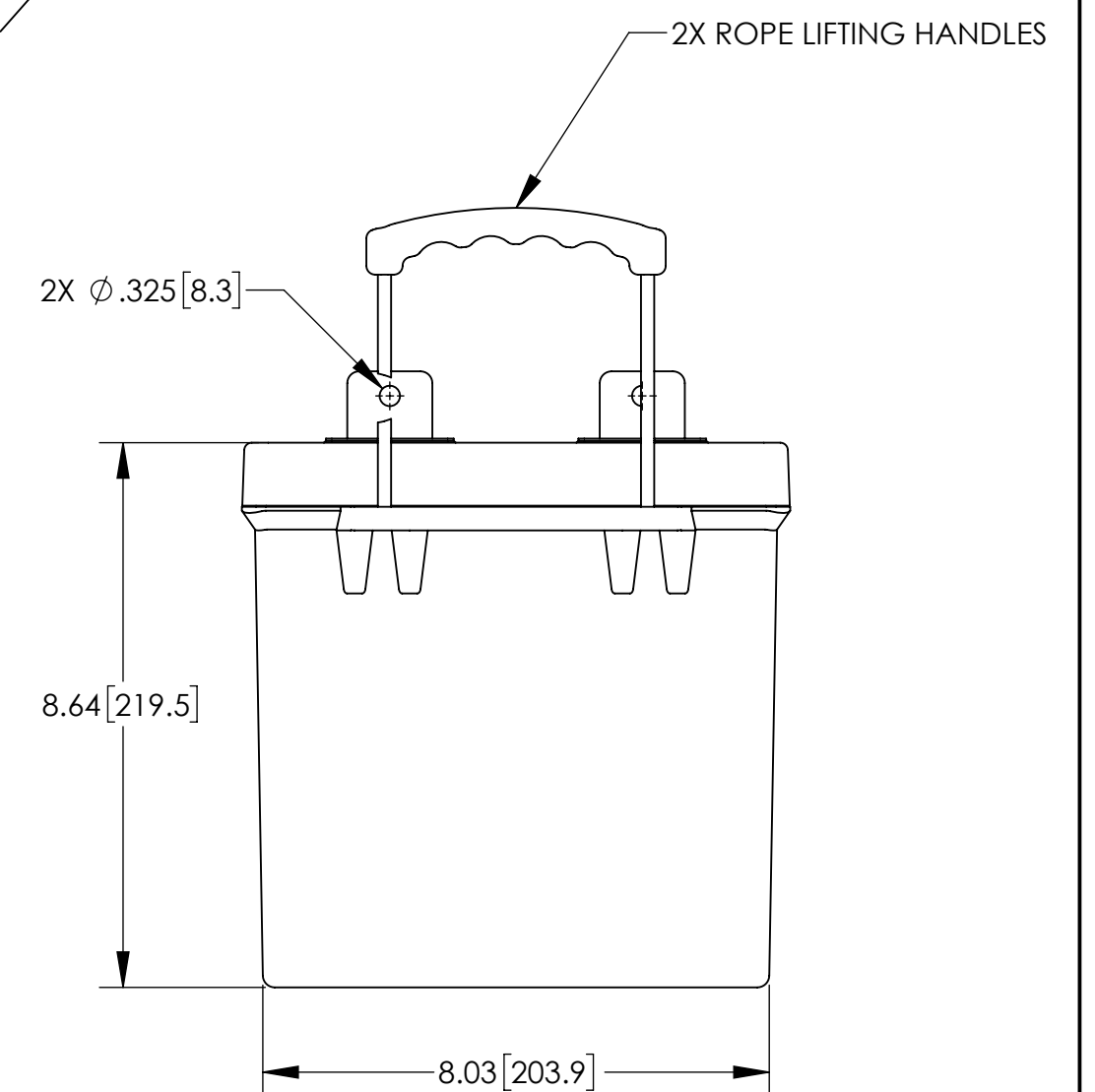
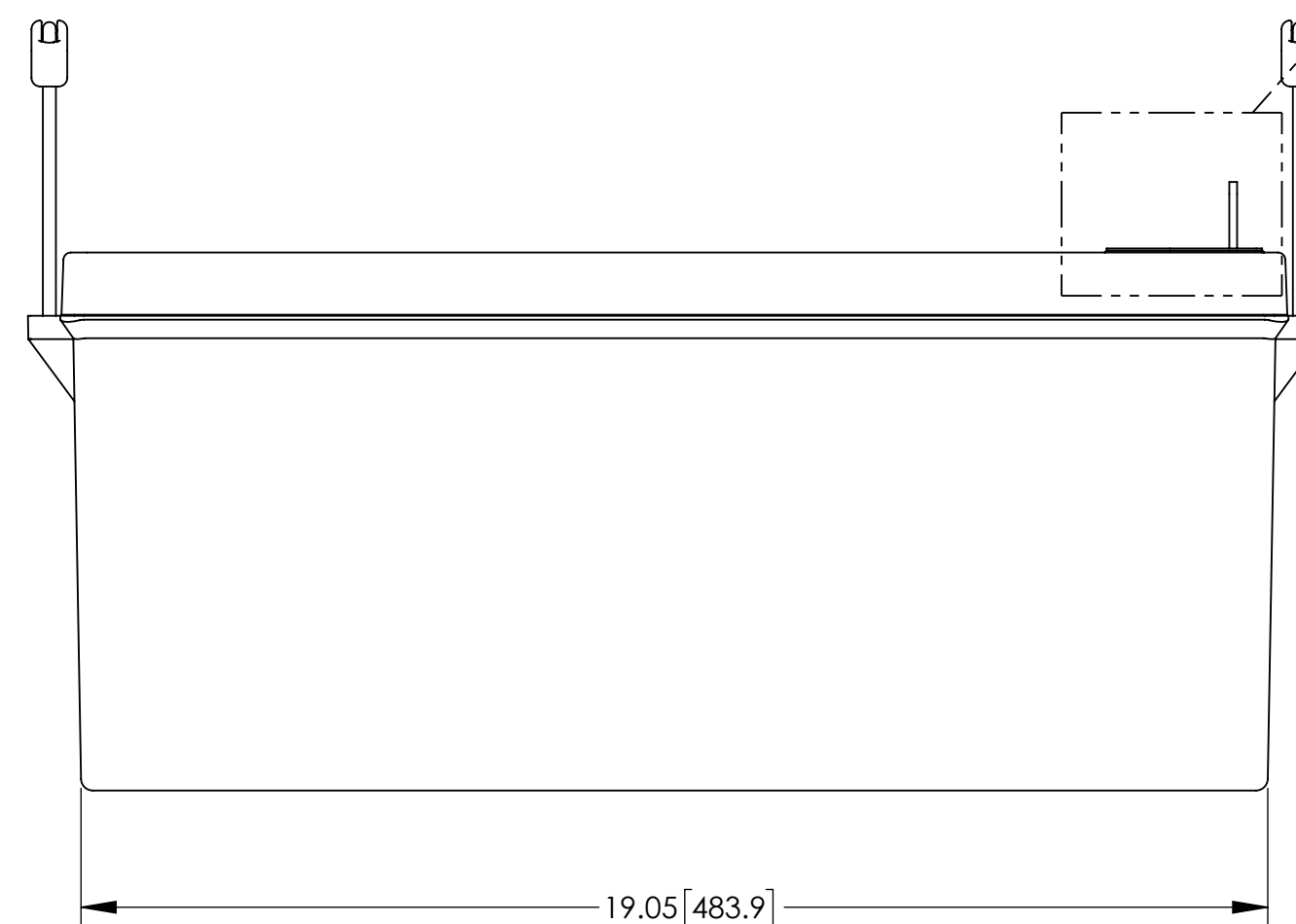
NOTES: UNLESS OTHERWISE SPECIFIED

1. SEE DRAWING NO. CB-00294 AND PROCEDURE P-1000 FOR ASSEMBLY AND TEST INSTRUCTIONS. PROCEDURES AND ASSEMBLY DRAWING ARE FOR INTERNAL USE ONLY.
2. ALL TESTING IS PERFORMED IAW BATTERY COUNCIL INTERNATIONAL STANDARDS.
3. ALL DIMENSIONS ARE IN INCHES [MILLIMETERS].
4. TERMINAL HARDWARE KIT PROVIDED, PART NUMBER 6916.

REVISIONS			
REV	DESCRIPTION	DATE	APPROVED
A	UPDATED FOR EU 1542 COMPLIANCE	8/16/24	PH



HEAVY DUTY L-BLADE  
SCALE 2 : 3



PART NUMBER	PVX-2120L
NOMINAL WEIGHT	127 LBS [57.6 KG]
NOMINAL VOLTAGE	12 VOLTS
RATED CAPACITY @ 24-HR RATE TO 1.75VPC @ 77°F(25°C)	212 AH
RATED ENERGY @ 24-HR RATE TO 1.75VPC @ 77°F(25°C)	2544 WH
NOMINAL INTENAL RESISTANCE @ 77°F(25°C)	2.26 MILLIOHMS
MAXIMUM POWER @ 77°F(25°C)	15.9 KW
CAPACITY FADE	TYPICALLY 50% OR 80% AT EOL (USER DEFINED)
POWER FADE	TYPICALLY 50% OR 80% AT EOL (USER DEFINED)
ENERGY ROUND TRIP EFFICIENCY	80%

ENVELOPE DRAWING

UNLESS OTHERWISE SPECIFIED DIMENSIONS ARE IN INCHES TOLERANCES ARE:			CONTRACT NO.		CONCORDE BATTERY CORPORATION 2009 SAN BERNARDINO RD, W. COVINA, CA 91790		
FRACTIONS	DECIMALS	ANGLES	APPROVALS	DATE	TITLE		
± 1/32	.XX ± .12 .XXX ± .060	± 1°	DRAWN N. SANCHEZ	7/23/20	BATTERY, 12 VOLT, PVX-2120L		
TREATMENT	NONE		CHECKED AMIII	7/23/20	SIZE	CAGE CODE	DWG NO.
FINISH	NONE		APPROVED PH	7/23/20	C	63017	PVX-2120L
SIMILAR TO	CALC WT		ISSUED DH	8/20/24	SCALE	1:3	REV A
							SHEET 1 OF 1