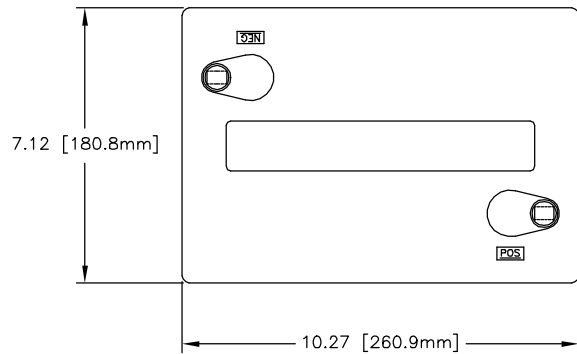


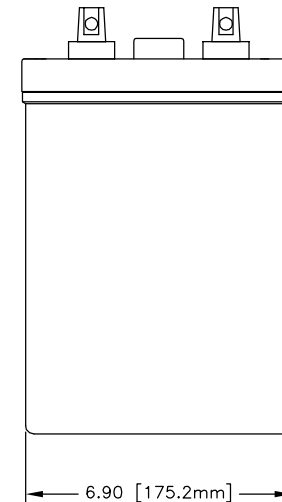
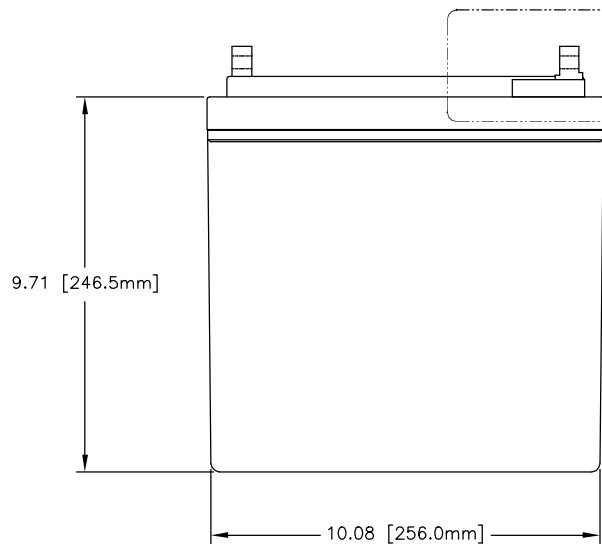
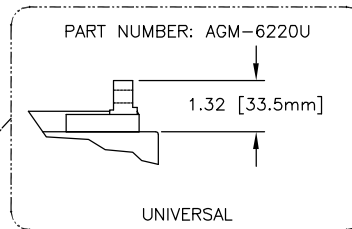
NOTES: UNLESS OTHERWISE SPECIFIED

1. SEE DRAWING NO. CB-00297 AND PROCEDURE P-1000 FOR ASSEMBLY AND TEST INSTRUCTION. PROCEDURES AND ASSEMBLY DRAWINGS ARE FOR INTERNAL USE ONLY.
2. ALL TESTING ARE IAW BATTERY COUNCIL INTERNATIONAL STANDARDS.
3. ALL DIMENSIONS ARE IN INCHES [MM].

REVISIONS			
REV	DESCRIPTION	DATE	APPROVED



AGM-6220 TERMINAL OPTIONS



CAPACITY RATINGS	
PART NUMBER	AGM-6220
NOMINAL WEIGHT	66 LBS [30.0 KG]
AMPERE HOUR CAPACITY @ 20 HOUR 1.75 VOLTS/CELL @ 77°F (25° C)	220 AH
MINUTES OF DISCHARGE @ 25 AMPS 1.75 VOLTS/CELL @ 77°F (25° C)	492 MIN

ENVELOPE DRAWING

QTY REQD	CAGE CODE	PART OR IDENTIFYING NO.	NOMENCLATURE OR DESCRIPTION	MATERIAL SPECIFICATION	ITEM NO.
PARTS LIST					
UNLESS OTHERWISE SPECIFIED DIMENSIONS ARE IN INCHES TOLERANCES ARE: FRACTIONS DECIMALS ANGLES .XX ± .06 .XXX ± .060			CONCORDE BATTERY CORPORATION 2009 SAN BERNARDINO RD, W. COVINA, CA 91790		
APPROVALS		DATE	TITLE		
DRAWN ELH		3/21/00	BATTERY, 6 VOLT, AGM-6220		
CHECKED S. VALDEZ		3/21/00	SIZE	CAGE CODE	DWG NO.
APPROVED DG		3/22/00	C	63017	AGM-6220
SIMILAR TO	ACT WT	CALC WT	ISSUED	DR	3/22/00
N/A	N/A	N/A	SCALE	NONE	SHEET 1 OF 1

ENGINEERING COPY 22MAR00